



Model Code F5031

revision 08 of 14-07-10
(the present replaces any previous versions)

Designer: CSI

Structure: Pinewood, beech-wood and plywood covered with polyurethane foam.

Spring system: Elastic webbing.

Seat Padding: Ecological polyurethane foam covered with 100% polyester layer.

Back Padding: Ecological polyurethane foam covered with 100% polyester layer.

Arm Interior: Ecological polyurethane foam covered with 100% polyester layer.

Removability: Not removable

Standard feet: PM369 satinized metal feet, h 13 cm. Some versions may be equipped with hidden feet with a supporting structural function.

Optional feet: PM431 metal feet, available with chrome or satinized finish, h. 13 cm. Rosewood colored PL437 beech-wood feet, h 13 cm, also available in black, cherry, dark walnut, light walnut, silver and natural.

Density of seat and back

Markets	Seat	Back
I	35 Medium	30
D - NL - CH	35 hard	30 hard
USA - California	35 soft	30 soft
GB	35 fire retardant	30 fire retardant
Others	35 Medium	30

Note: when no values/contents are specified in the chart, please refer to 'Others' field/area.

Coverings

	suggested	not suggested	not possible
thick leathers	✓		
thin elastic leathers	✓		
natural leathers	✓		
fabric*	✓		
microfibre*	✓		
leather + split	✓		
DeLuxe			✓
multicovering			✓
multicolour			✓

Multicovering / Components / Optional vers.



Feet



PM369

PM431

PL437

Ottoman



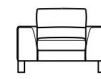
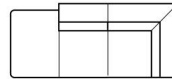
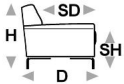
With the reservation of carrying for production purposes and without advanced notices modifications on the materials, coverings and dimensions of the product as indicated in the relevant specification. The given dimensions and volume are of indicative value being subject to the production process tolerances.

↑ fold following the dotted line ↑

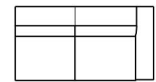
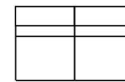
simon.est 216



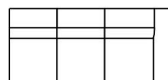
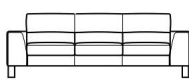
L Length - H Height - D Depth - SH Seat Height - SD Seat Depth
Dimensions refer to maximum sizes.



dimensions	L 94 H81 D94 SH45 SD55	L 213 H81 D94 SH45 SD55	L 213 H81 D94 SH45 SD55	L 112 H81 D94 SH45 SD55	L 101 H81 D94 SH45 SD55
version code	040	043	044	100	110
Description	square corner	sq.cor.chr.sq.mer. rig.fac.	sq.cor.chr.sq.mer.le fac.	chair	1 right arm facing chair



L 101 H81 D94 SH45 SD55	L 75 H81 D94 SH45 SD55	L 172 H81 D94 SH45 SD55	L 202 H81 D94 SH45 SD55	L 150 H81 D94 SH45 SD55	L 176 H81 D94 SH45 SD55
120	130	200	240	243	251
1 left arm facing chair	chair without armr.	2 seater	2 1/2 seater	2 1/2 seater with no armrests	1 right arm fac.2 1/2 str



L 176 H81 D94 SH45 SD55	L 232 H81 D94 SH45 SD55	L 206 H81 D94 SH45 SD55	L 206 H81 D94 SH45 SD55	L 97 H40 D97 SH- SD-
252	346	347	348	560
1 left arm fac. 2 1/2 str	3/3 seater	1right arm facing 3/3 str	1left arm facing 3/3 str	big ottoman

↓ fold following the dotted line ↓

